

Managing and access your imagery with ArcGIS

Sean Cullen

Tendai Dupwa



THE SOUTHERN AFRICA ESRI USER CONFERENCE 2023



Agenda

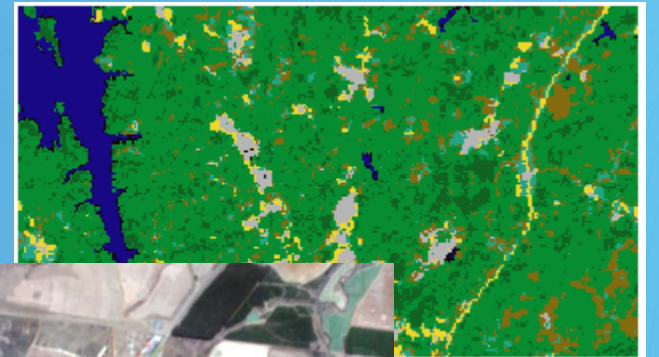
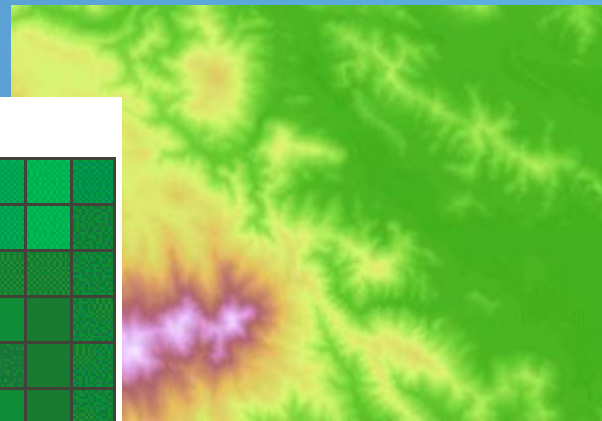
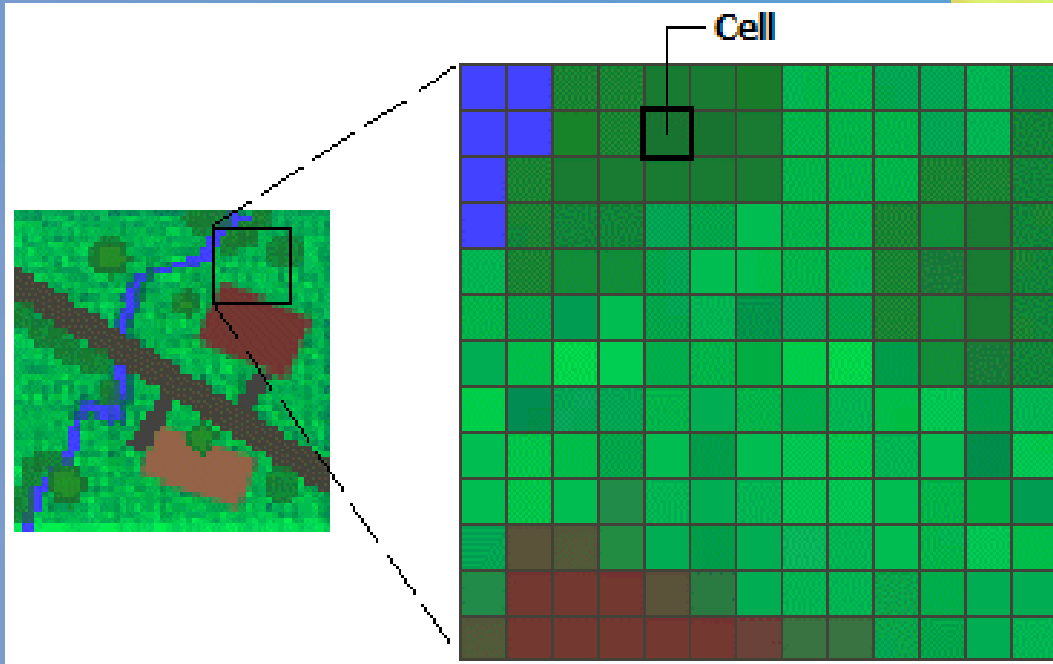
- Add imagery to a map
 - From a file
 - From metadata
 - From a service
- Rendering options
 - Band combinations

Agenda

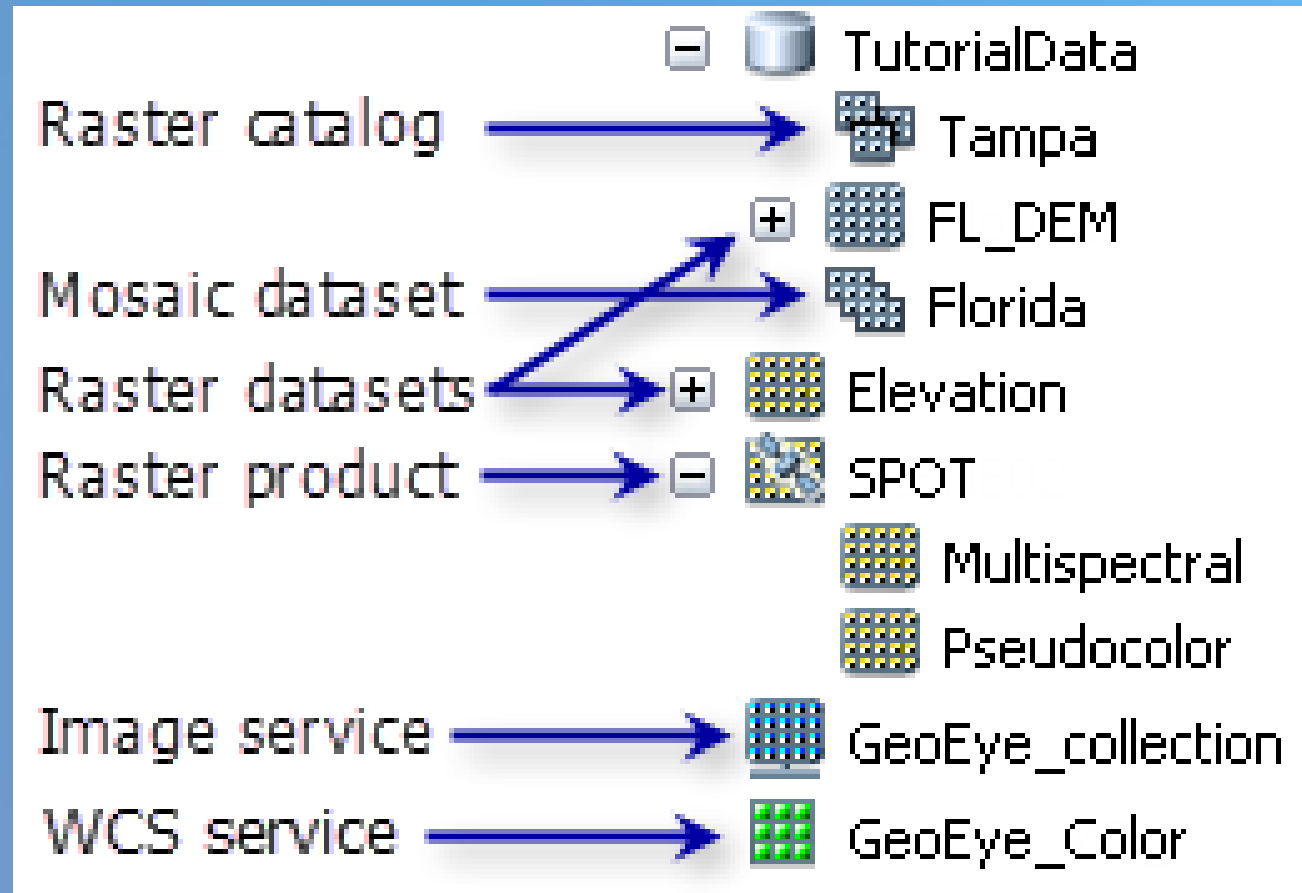
- Raster function
 - Function chains
- Managing your imagery
 - Mosaics

Imagery and Raster's

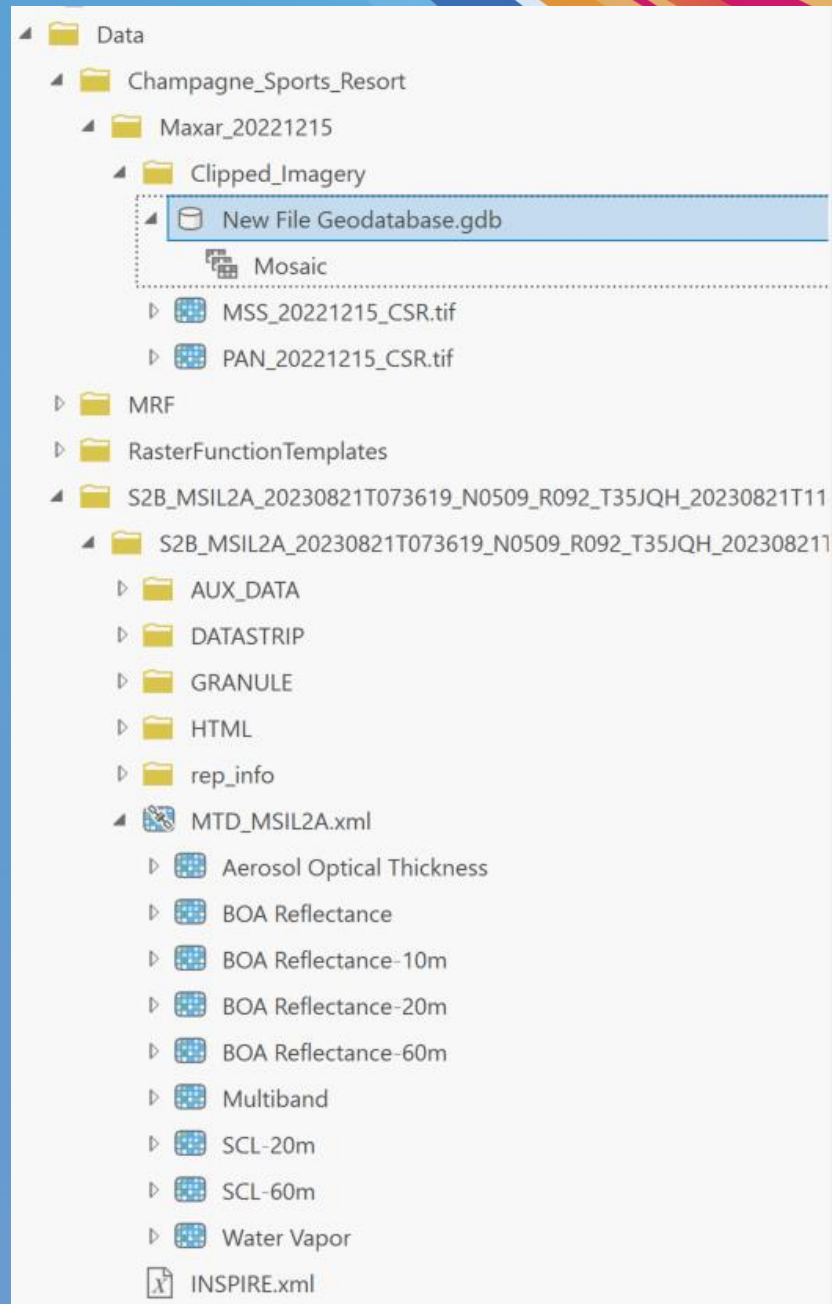
- In its simplest form, a raster consists of a matrix of pixels (or cells) organized into rows and columns (or a grid) in which each pixel contains a value representing information, such as image reflectance or temperature.



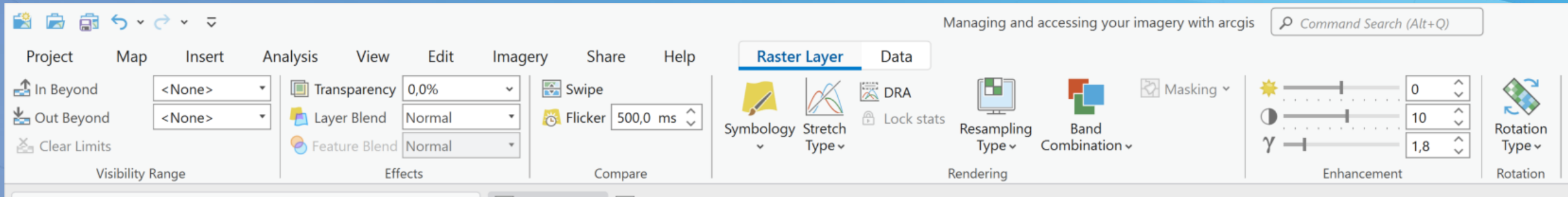
Adding imagery to your map



Imagery formats



Raster ribbon



- Image Analyst Tools
 - Change Detection
 - Classification and Pattern Recognition
 - Deep Learning
 - Extraction
 - Map Algebra
 - Math
 - Motion Imagery
 - Multidimensional Analysis
 - Overlay
 - Statistical
 - Synthetic Aperture Radar

Raster functions

Raster Functions

Find Raster Functions

Project System Custom

▼ Analysis

- Binary Thresholding
- CCDC Analysis
- Compute Change
- Detect Change Usi...
- Generate Trend
- Heat Index
- Kernel Density
- LandTrendr Analysis
- NDVI
- NDVI Colorized
- Predict Using Trend
- Process Raster Colle...
- Tasseled Cap (Kauth-Tho...
- Weighted Overlay
- Weighted Sum
- Wind Chill

▼ Appearance

- Contrast and Brightness
- Convolution
- Pansharpen
- Statistics and Histogram
- Stretch

▼ Classification

- Classify
- Linear Spectral Un...
- ML Classify
- Predict Using Regression
- Region Grow
- Segment Mean Shift

▼ Conversion

- Color Model Conversion
- Colormap
- Colormap To RGB
- Grayscale
- Rasterize Attributes
- Rasterize Features
- Spectral Conversion
- Trend To RGB
- Unit Conversion
- Vector Field

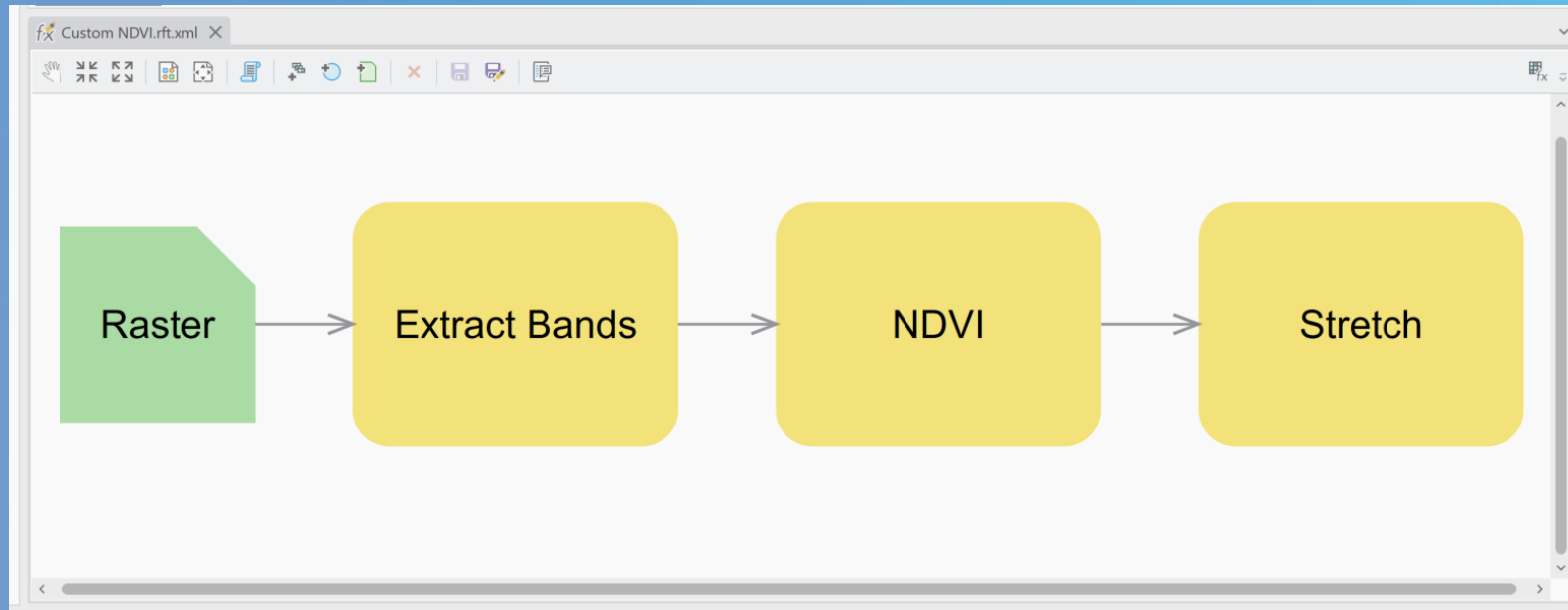
▼ Correction

- Apparent Reflectance
- Geometric

▼ Data Management

- Aggregate
- Aggregate Multidimen...
- Attribute Table
- Boundary Clean
- Buffered
- Clip
- Composite Bands
- Constant
- Create Color Composite
- Expand
- Extract Bands
- Geometric Median
- Interpolate Irregular Data
- Interpolate Raster By Di...
- Key Metadata
- Mask
- Merge Rasters
- Mosaic Rasters
- Multidimen...
- Multidimen...
- Nibble
- Random
- RasterInfo
- Recast
- Region Group
- Reproject
- Resample
- Shrink
- Swath
- Transpose Bits

Raster function chains



Mosaics

Geoprocessing ⌵ ⌵ ✕

← Create Mosaic Dataset +

Parameters Environments ?

Output Location
 📁

Mosaic Dataset Name

Coordinate System
 ⌵ 🌐

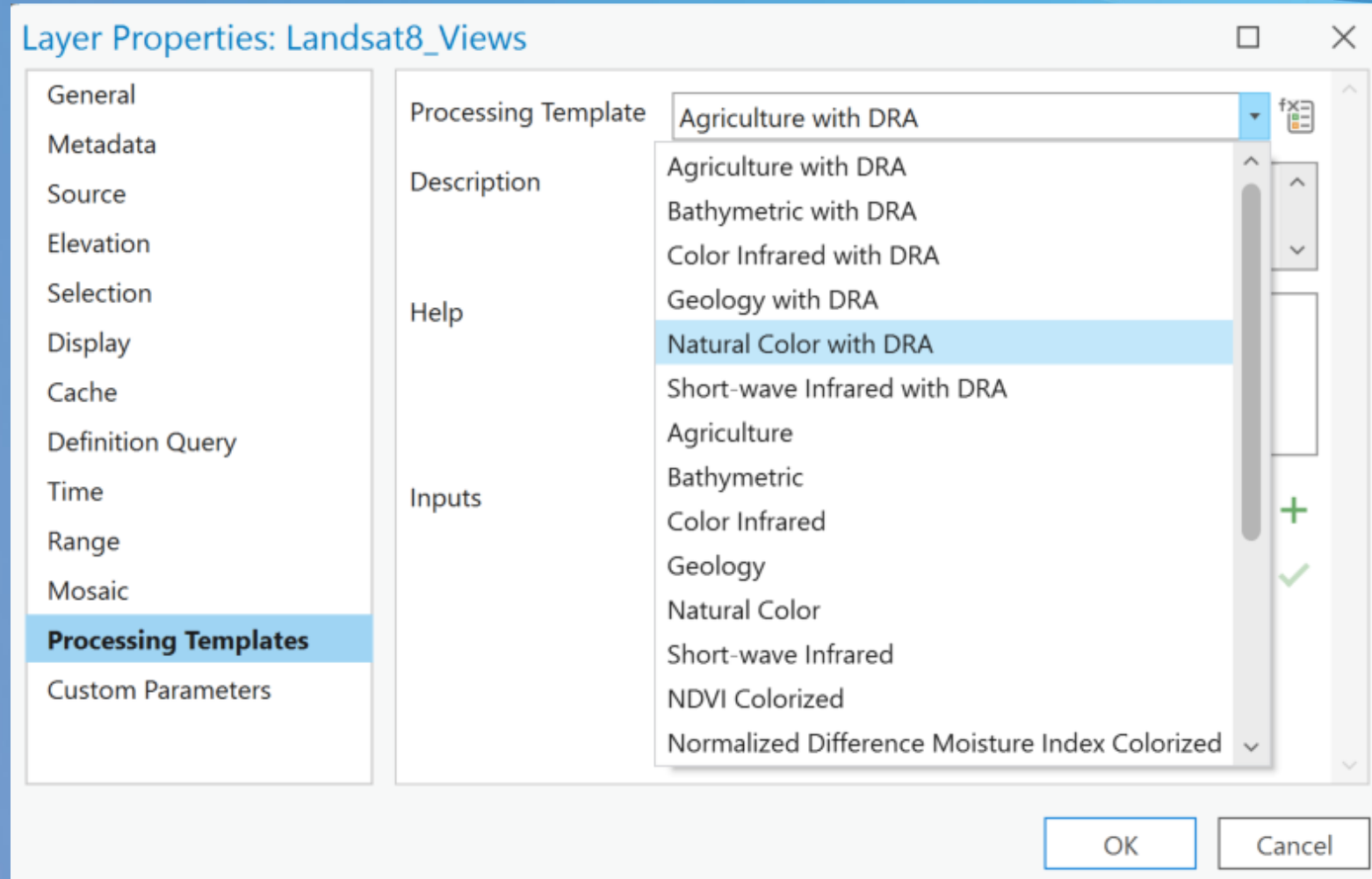
Product Definition
 ⌵

➤ Product Properties

⌵ Pixel Properties

Pixel Type
 ⌵

Processing templates





**THE SOUTHERN AFRICA
ESRI USER CONFERENCE
2023**

CONNECTING COMMUNITIES